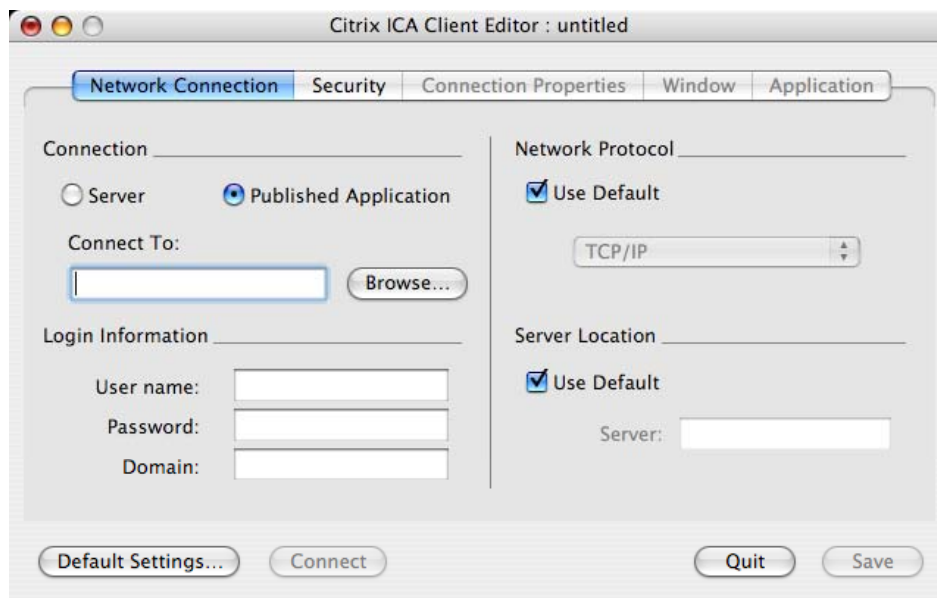


Analysis.utk.edu Details for Macintosh OS X

The Statistical Consulting Center

This document is a companion to *How to Use Analysis.utk.edu* and it contains only the additional information you need to know to use the server from a Macintosh OS X computer. For information including how to log on and where to save your files see <http://oit.utk.edu/scc/HowToUseAnalysis.utk.edu.pdf>.

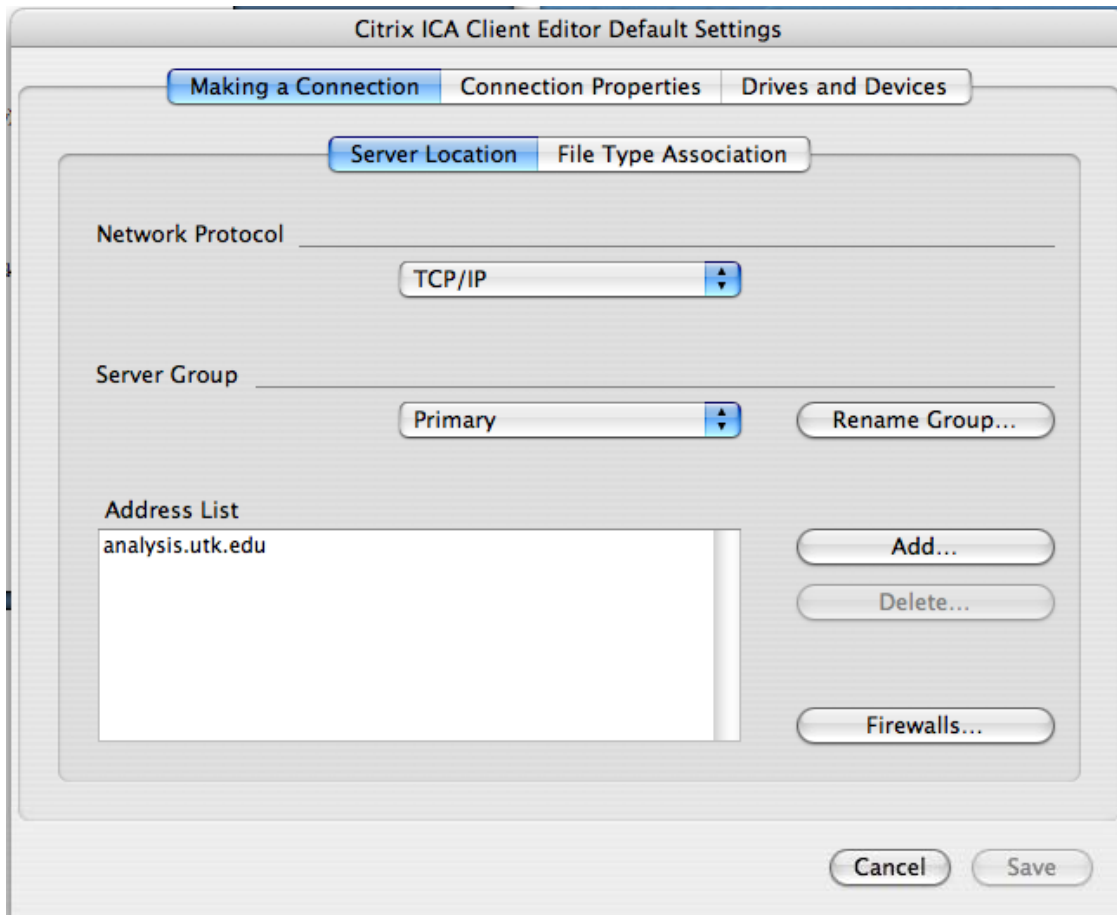
1. Point your browser to <https://analysis.utk.edu>.
2. Click on the link on the lower right of the screen to download the ICA Client and install it. If you have problems at this step, you can try the OSX client at <http://www.citrix.com/download>. That site also has Administrator's Guides with detailed instructions.
3. Start the ICA Client Editor. Its window will open, see below.



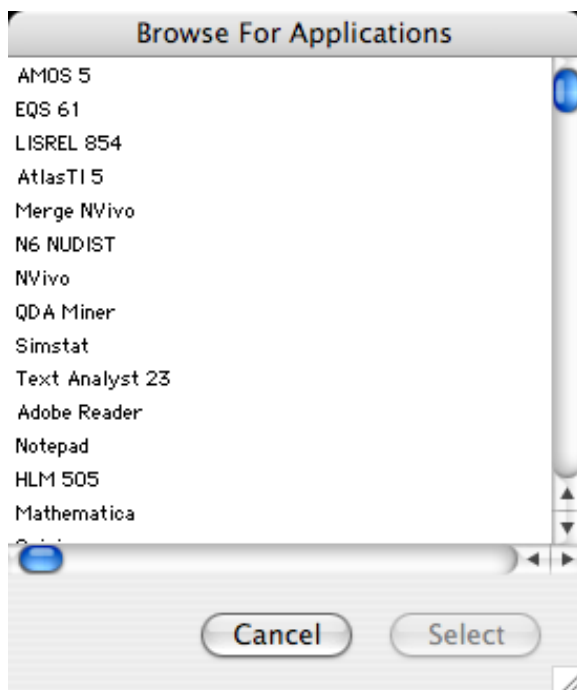
4. Click on Default Settings and the *Default Settings* window below will appear (see below). Enter the following settings:

Network Protocol: TCP/IP

Server Group: Primary
5. Click Add to bring up the *Server Address* box. Enter *analysis.utk.edu* in the box and click *OK* to close that window and then click *Save* to close the *Default Settings* window.

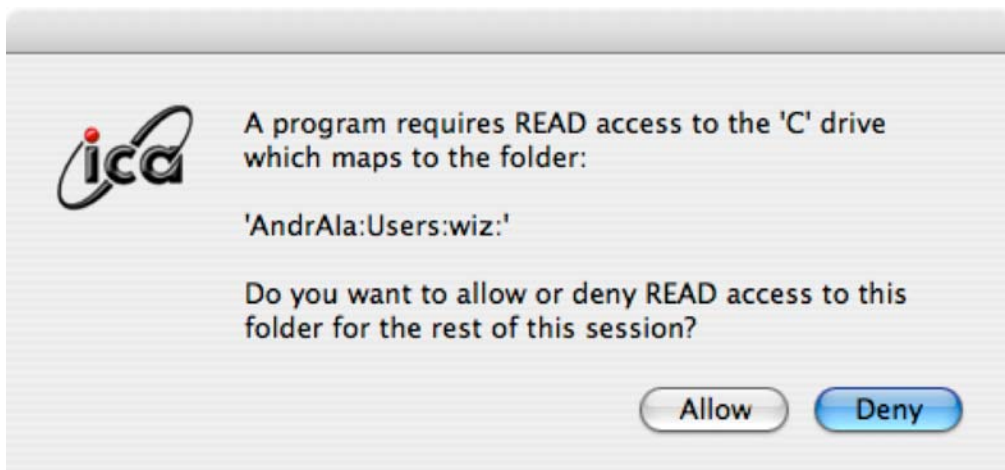


- You should now be in the *Client Editor* window (first one shown above), with the *Network Connection* tab selected. Click on *Published Application* radio button then click *Browse* and the window below will appear. Choose the application you wish to use and click *Select*.



7. This optional step lets you change the size of the application's window. In the Client Editor window (first one shown above), select the *Window* tab. Under *Window Size*, uncheck the *Use Default* option then choose the size of window you want from the drop-down list.
8. Save these settings in a file with a name of the application you chose. In the future, start the application by double-clicking on this file. Then login using:

User Name: your_NetID (i.e. fill in your NetID here)
Password: your_NetID_password
Log on to: UTK-DS (default)
9. When you login, you may see the error message, "You do not have access to log on to this Session." This means "Log on to..." is not set to UTK-DS.
10. Windows like the one below will appear when applications can read/write to your local hard drive. If you wish to use your local files, you will have to click *Allow*.



11. When you exit applications set up according to these instructions, the server will log you off automatically. There is no separate *Logout* step as there is for Windows based computers using the Web Client.